

Style FLB

Fabricated Line Blinds
Carbon Steel & Stainless Steel
150 lb. to 2500 lb. Flanged



Quick Acting Line Blinds

APPLICATIONS

Keckley's Quick Acting Line Blinds are designed for applications where positive, visual indication of line closure/opening are required.

FEATURES

The position of the spectacle plate indicates whether the line is open or closed, reducing or eliminating the possibility of costly or dangerous situations. Keckley Quick Acting Line Blinds utilize O-ring seals to achieve the most effective shutoff. Our standard O-ring is located in a dovetail groove in both faces of the spectacle plate.

Two stainless steel guide pins are located in the face of the body flange to ensure accurate alignment of the spectacle plate with the bore.

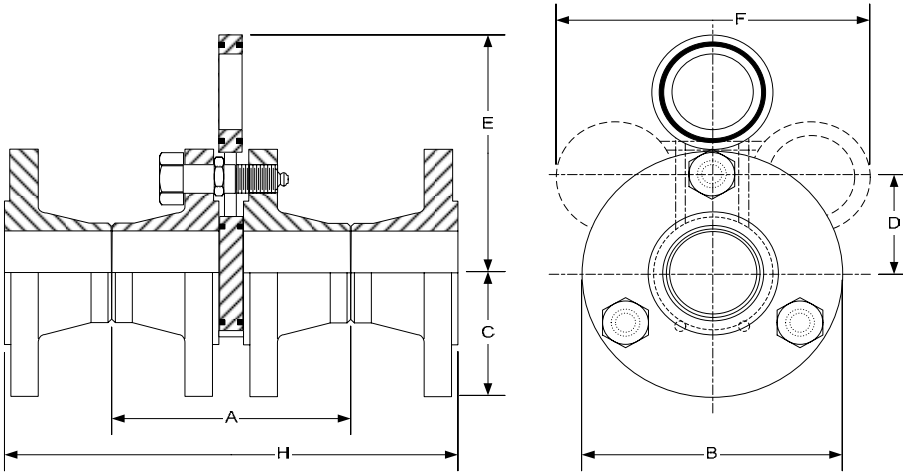
With the Keckley Quick Acting Line Blind, one operator can change a 6" Line Blind in five minutes without the need for special tools as compared to a typical 6" spectacle blind, which takes two maintenance men approximately 1-1/2 hours to change over.

CONSTRUCTION

The standard model has a carbon steel body and zinc plated carbon steel trim. Stainless steel and other alloys are also available to meet your specific requirements. All units are available flanged or butt weld.

Style FLB

Fabricated Line Blinds
Carbon Steel & Stainless Steel
150 lb. to 2500 lb. Flanged & Butt Weld



SIZE		DIMENSIONS – 150# CLASS													
		A		B		C		D		E		F		H	
in	mm	in	mm	in	mm	in	mm	in	mm	in	mm	in	mm	in	mm
1	25	5-1/8	130	4-7/8	124	2-1/8	54	1-15/16	49	4-13/16	122	5-3/4	146	9-11/16	246
1-1/2	38	5-5/8	143	6-1/8	156	2-1/2	64	2-5/8	67	6	152	7-1/4	184	10-11/16	272
2	50	5-3/4	146	6-1/2	165	3	76	5-15/32	63	6-3/8	162	7-13/16	198	10-15/16	278
2-1/2	65	6-1/4	159	7-1/2	191	3-1/2	89	3-3/32	79	7-7/16	189	9	229	11-15/16	303
3	80	6-1/2	165	8-1/4	210	3-3/4	95	3-7/16	87	8-5/8	219	10-5/8	270	12-3/16	310
4	100	7	178	10	254	4-1/2	115	4-3/16	106	10-1/2	267	13	330	13-3/16	335
5	125	8	203	11	280	5	127	4-5/8	118	12	305	15	381	14-3/16	360
6	150	8-1/8	206	12-1/2	318	5-1/2	140	5-3/8	137	13-7/8	352	17-1/2	445	15-5/16	389
8	200	9-1/8	232	15	381	6-3/4	171	6-5/8	168	16-15/16	430	21-3/8	543	17-5/16	440
10	250	9-5/8	245	17-1/2	445	8	203	7-5/8	194	20-3/8	518	26	660	17-13/16	452
12	300	10-3/4	273	20-1/2	521	9-1/2	241	9-1/8	232	25-1/4	641	32-1/4	819	19-15/16	506
14	350	11-3/4	298	23	584	10-1/2	267	10-1/4	260	28-11/32	720	36-1/4	920	21-15/16	557
16	400	12-1/8	308	25-1/2	648	11-3/4	299	11-1/4	286	30-3/32	765	38-1/2	978	22-5/16	567
18	450	13-3/4	337	28	711	12-1/2	318	12-3/4	324	34-1/16	865	43-5/8	1108	24-7/16	621
20	500	13-5/8	346	30-1/2	775	13-3/4	350	13-3/4	350	37-5/16	948	47-7/8	1216	25-3/16	640
24	600	14-3/8	365	36	915	16	407	15-1/2	394	44-3/16	1122	56-3/4	1441	26-9/16	675

Certified dimensional drawings are available upon request.
†This table reflects only the nearest metric equivalents.

Size		WEIGHTS															
		1"	1-1/2"	2"	2-1/2"	3"	4"	5"	6"	8"	10"	12"	14"	16"	18"	20"	24"
Butt Weld	lbs	11	17	22	29	35	62	77	101	159	220	339	437	597	787	997	1471
	kgs	5.0	7.7	10	13	16	28	35	46	72	100	154	198	271	357	452	667
Flanged	lbs	17	25	34	45	55	92	115	159	237	324	559	657	877	1087	1357	1990
	kgs	7.7	11.4	15.5	20.5	25	42	52	72	108	147	254	298	398	493	615	903